



COMPLETION BOOK

2025-2026

10 PLACES | WITH JIJI | GEOLOGY



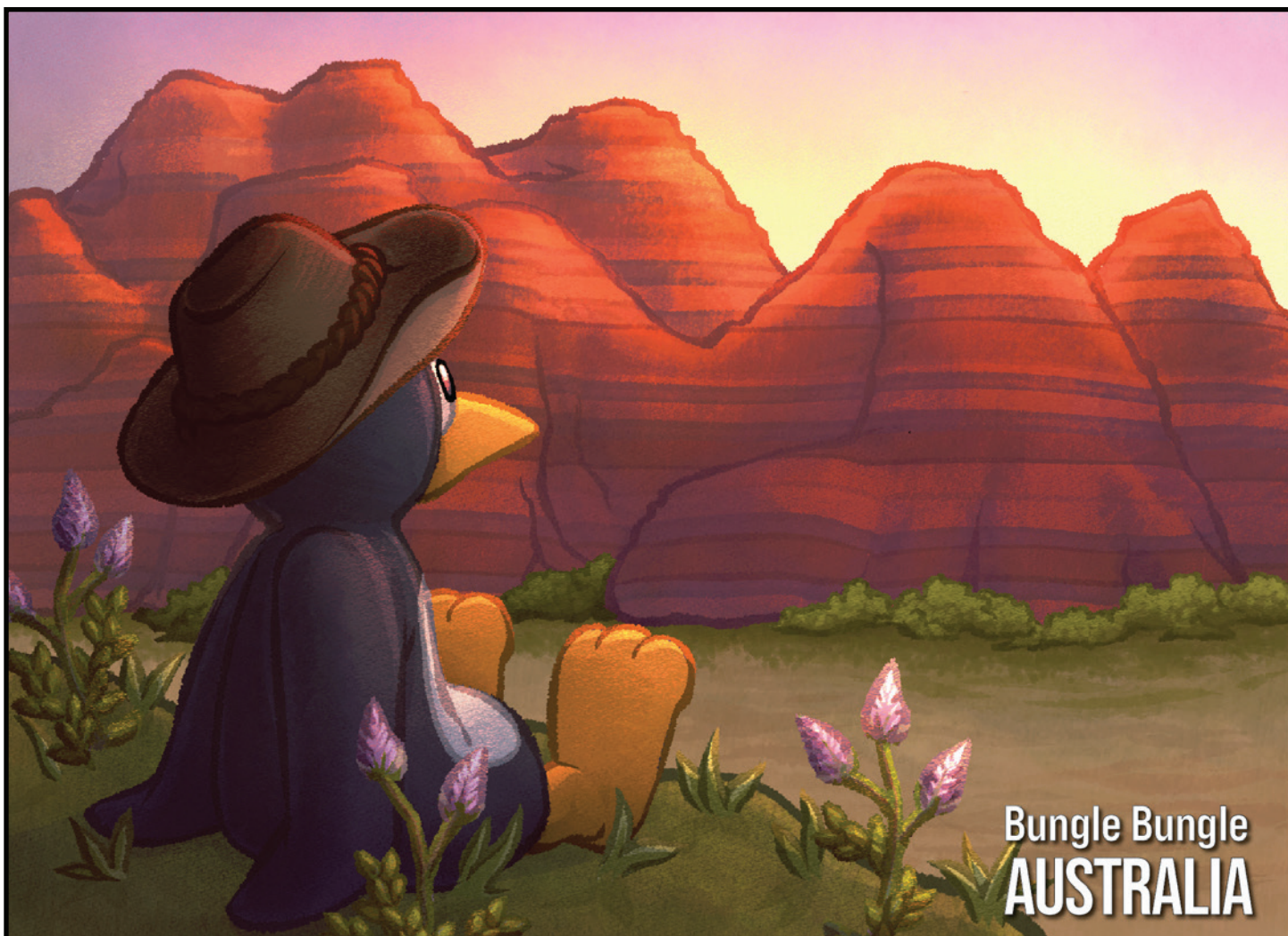


Waitomo Glowworm Caves **NEW ZEALAND**

WHY Jiji THINKS IT ROCKS!

In New Zealand, there are caves filled with a sparkling surprise! The Waitomo Glowworm Caves are home to a magical insect called a glowworm that hangs out on the walls and ceiling like little cave fairies. They glow with a beautiful blueish-green light, turning the dark caves into a twinkling wonderland!

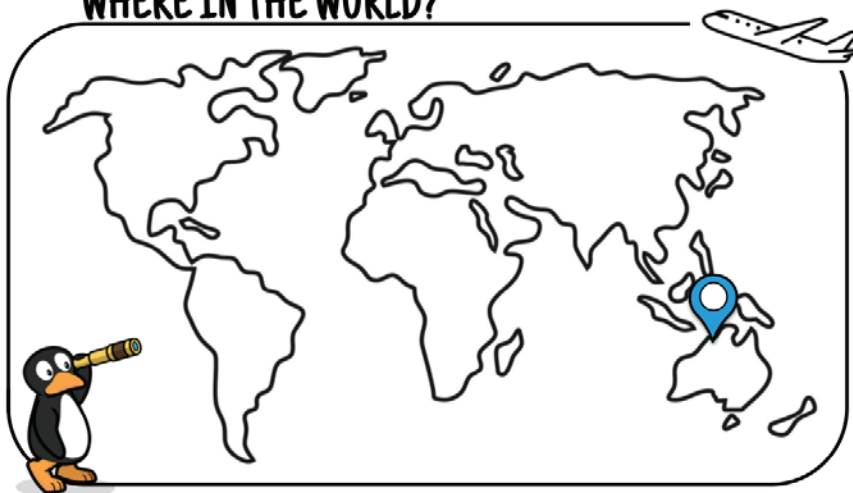




WHY JIJI THINKS IT ROCKS!

Way out in Australia, there's a cool place called Purnululu National Park. Inside it, you'll find giant round rocks called the Bungle Bungles. These rocks look just like huge beehives—with a unique orange-and-black ringed pattern! Some scientists think these funny-looking rocks might have been formed when a giant space rock - like a meteor - crashed into Earth a long time ago!

WHERE IN THE WORLD?

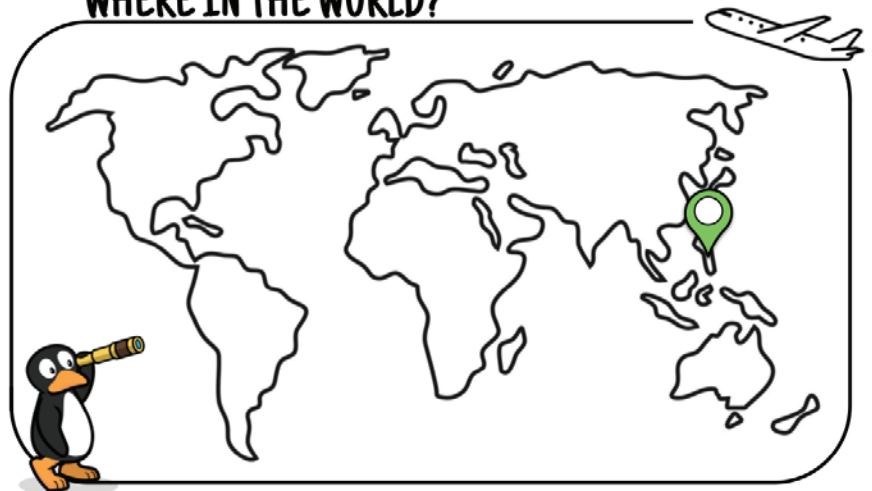


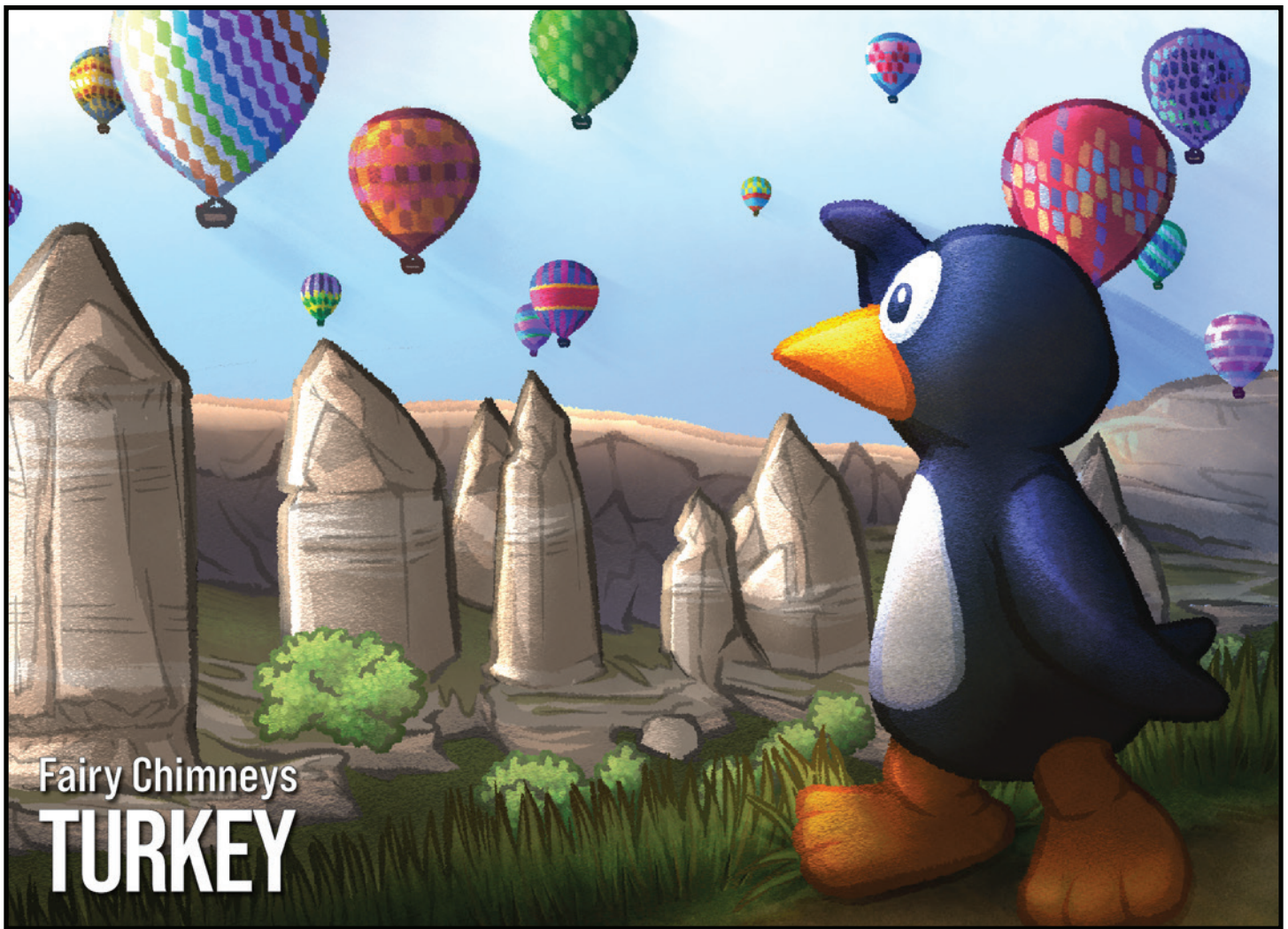


WHY JIJI THINKS IT ROCKS!

On an island in the Philippines called Bohol, there's a fascinating place called the Chocolate Hills. Made up of more than 1,700 hills, green grass covers everything during the rainy season. But when summer comes and the grass turns brown, the hills look like giant chocolate kisses—which is why people call them the Chocolate Hills. It's a natural wonder that has amazed visitors for hundreds of years!

WHERE IN THE WORLD?





WHY JIJI THINKS IT ROCKS!

In Turkey, you can see the Fairy Chimneys - tall, pointy rock towers. These strange and cool shapes were made by nature over millions of years, as wind and rain slowly carved them out of soft volcanic rock. People discovered they could carve homes right into the soft rock, like building houses inside caves. Today, some of those cave homes have turned into cool hotels where you can sleep inside a fairy chimney!

WHERE IN THE WORLD?



ST Math
Created by MIND Education®

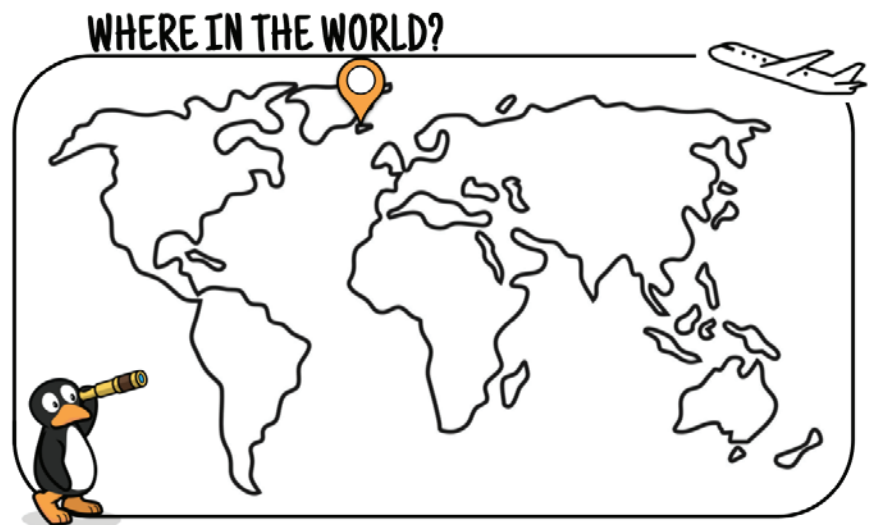
© 2025 MIND Education®. All rights reserved.



Reynisfjara Beach ICELAND

WHY JIJI THINKS IT ROCKS!

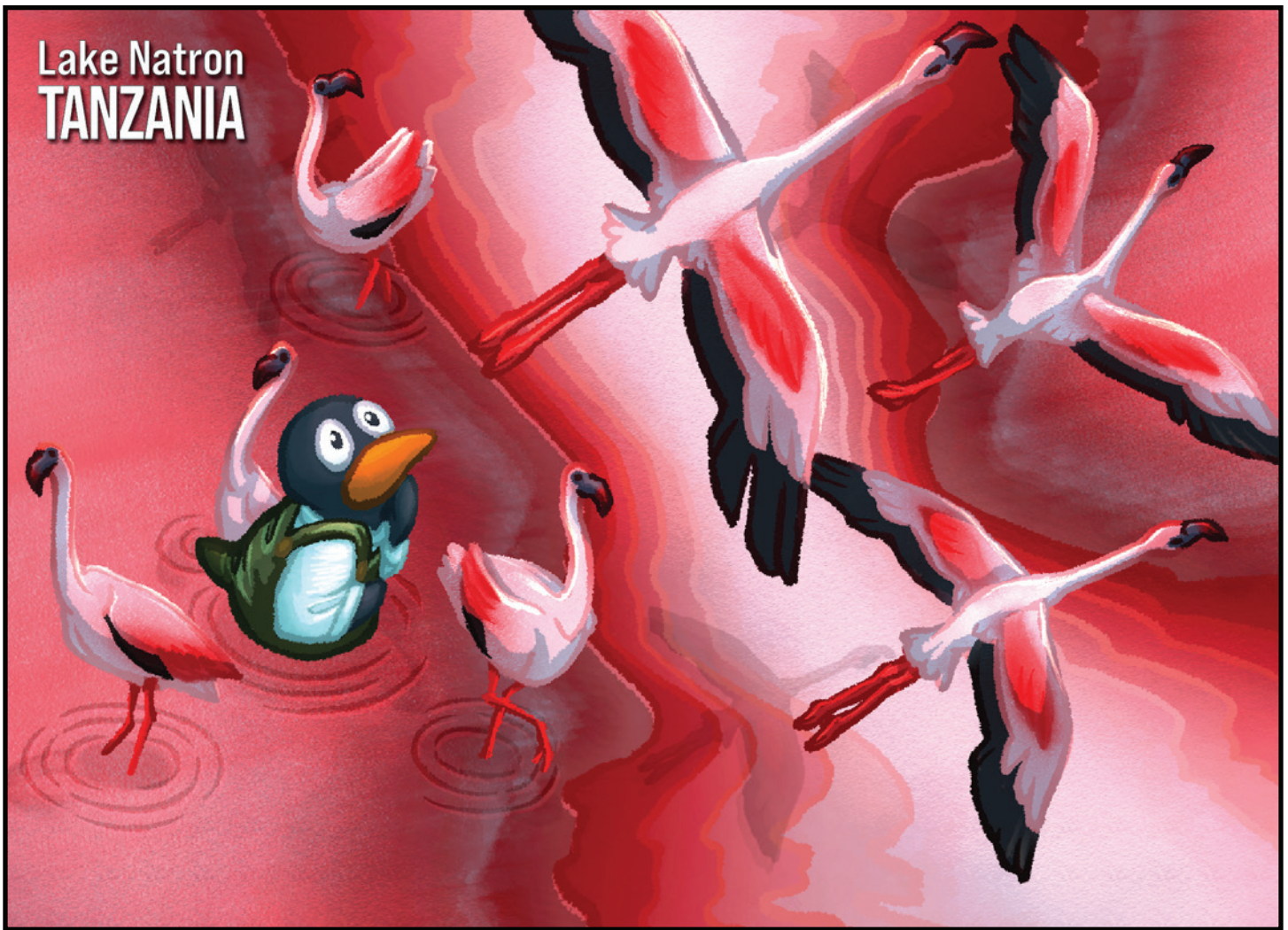
Reynisfjara Beach is a special place in Iceland with black sand made from volcanoes! At Reynisfjara, you can see tall rock towers called basalt columns, big sea rocks called sea stacks, and even a cool cave to explore. Big waves can suddenly crash onto the shore, so it's important to stay safe and not get too close to the water when looking at all of these amazing sights!



ST Math.
Created by MIND Education®

© 2025 MIND Education®. All rights reserved.

Lake Natron TANZANIA



WHY JIJI THINKS IT ROCKS!

Lake Natron is a super-salty lake in Africa, in a country called Tanzania. Sometimes, the top of the lake turns bright red because of the salt-loving algae in it! Lake Natron looks amazing, but its water can be very dangerous and even poisonous because of the nearby volcano. Most animals avoid it, but the lesser flamingo thrives there!

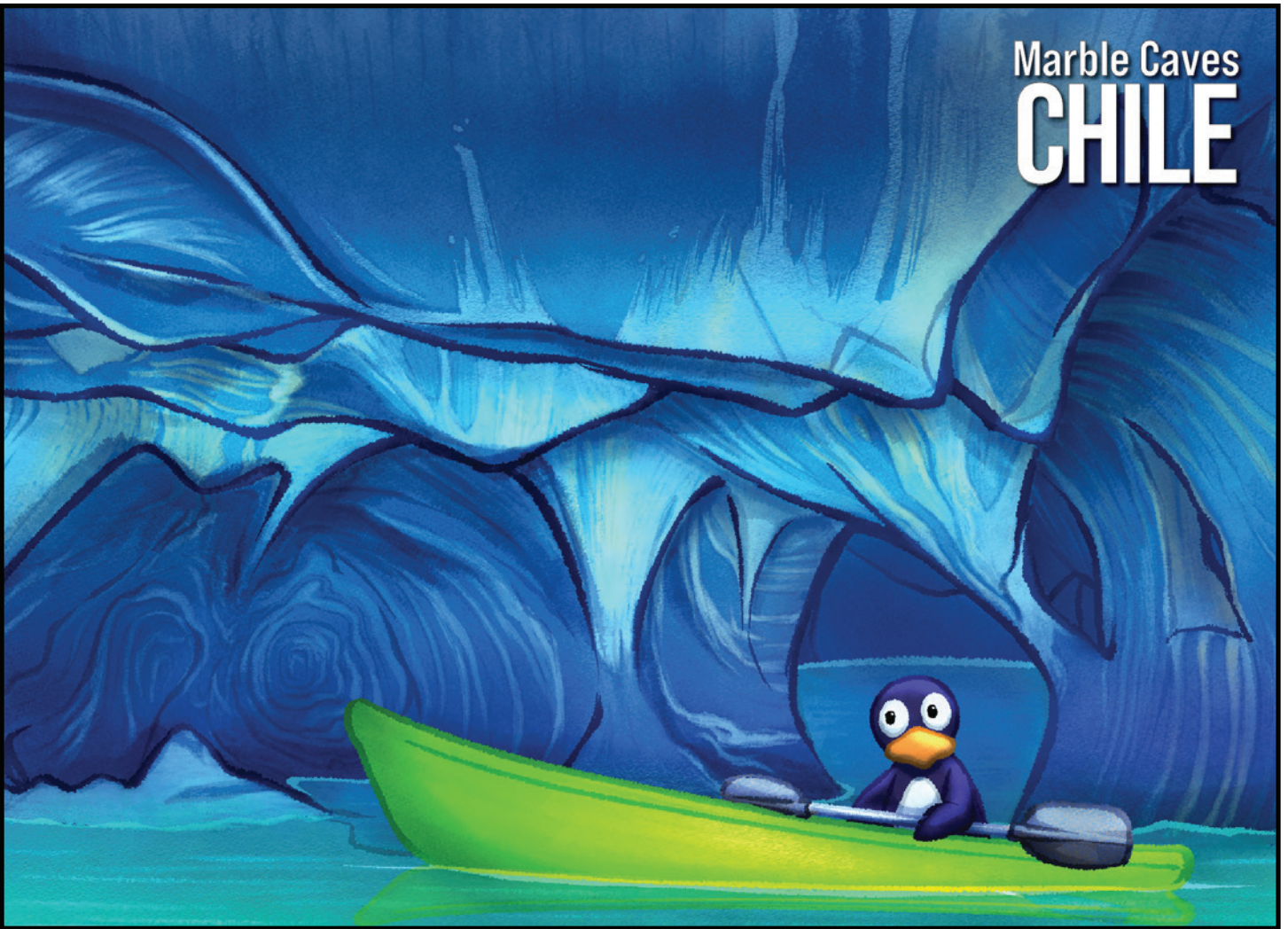
WHERE IN THE WORLD?



ST Math
Created by MIND Education®

© 2025 MIND Education®. All rights reserved.

Marble Caves CHILE



WHY JIJI THINKS IT ROCKS!

In the south of Chile, there's a magical place called the Marble Caves at the General Carrera Lake. For over 6,000 years, waves have gently carved the caves into fun shapes like tunnels, pillars, and secret little corners. The walls of the caves are as smooth as glass and shine with amazing colors—like turquoise, seafoam green, and emerald - when the water below reflects sunlight onto them!

WHERE IN THE WORLD?



ST Math
Created by MIND Education®

© 2025 MIND Education®. All rights reserved.



WHY Jiji THINKS IT ROCKS!

Vinicunca, or Rainbow Mountain, is a dazzling natural wonder found in Peru. Sitting pretty at a sky-high 17,000 feet in the Andes, it's striped with vibrant colors of red, yellow, green, and turquoise — all thanks to a mix of minerals like iron oxide, sulfur, and copper. Hidden under snow for ages, this colorful gem only recently revealed itself and quickly became a must-see for adventurers and explorers - like Jiji!

WHERE IN THE WORLD?



ST Math
Created by MIND Education®

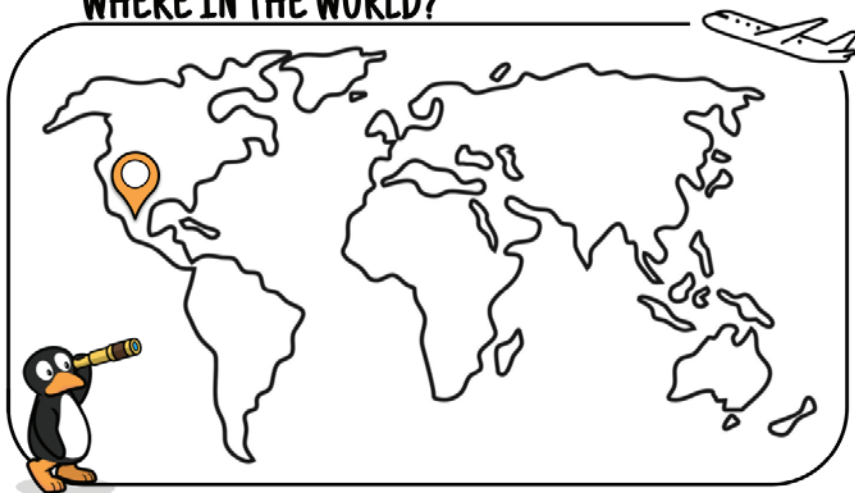
© 2025 MIND Education®. All rights reserved.



WHY JIJI THINKS IT ROCKS!

The Cave of the Crystals is a special cave in Mexico filled with some of the biggest crystals ever discovered. Made of a mineral called selenite, some of these crystals are as long as a school bus and weigh as much as 2 elephants! The cave is deep inside a mountain, and it's very hot and wet inside which makes it very difficult to visit.

WHERE IN THE WORLD?



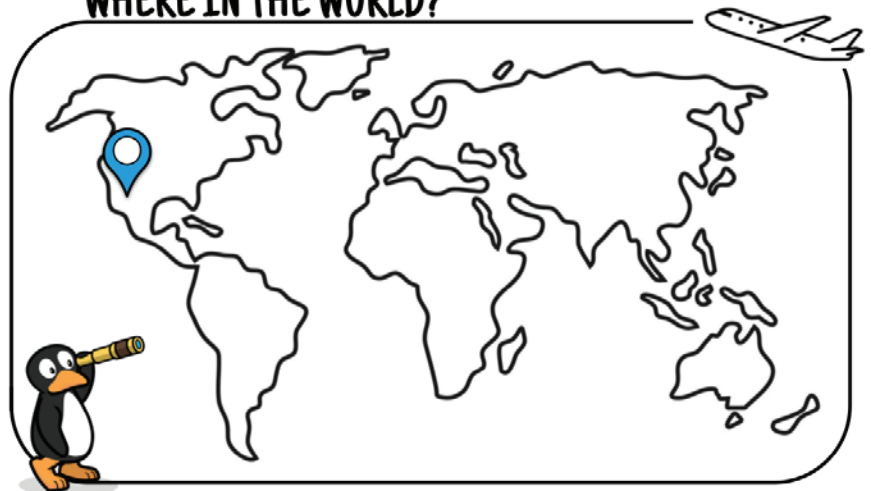
The Racetrack Playa UNITED STATES



WHY JIJI THINKS IT ROCKS!

Sailing stones are big rocks that move across the ground, leaving long trails behind them, like they're going on a little adventure. Incredibly, no people or animals are involved—it's nature doing something really cool! This happens in super dry places like Death Valley, where ice, water, and wind work together to gently push the rocks along the flat ground.

WHERE IN THE WORLD?



ST Math
Created by MIND Education®

© 2025 MIND Education®. All rights reserved.

WHY Jiji THINKS IT ROCKS!