



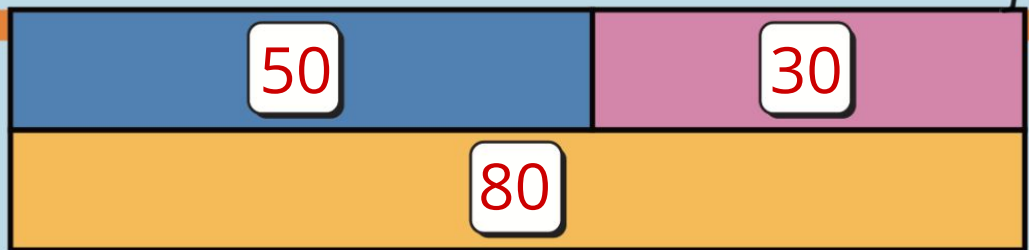
MISSING ADDEND

How much more is needed to make 68 ?



What would this problem look like in the game?

$$30 + 50 = 80$$



$$40 + 50 = 90$$

$$30 + 42 = 72$$

$$95 = 73 + 22$$

I ran for 25 minutes this weekend!

If I ran for 12 minutes today, how many minutes did I run yesterday?



JIBBIT

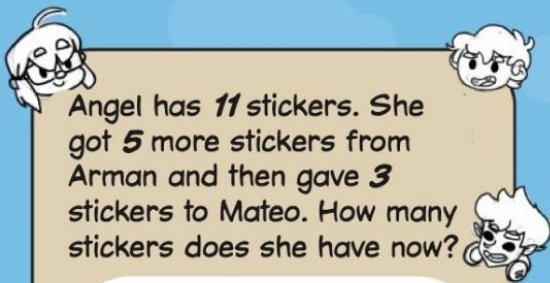
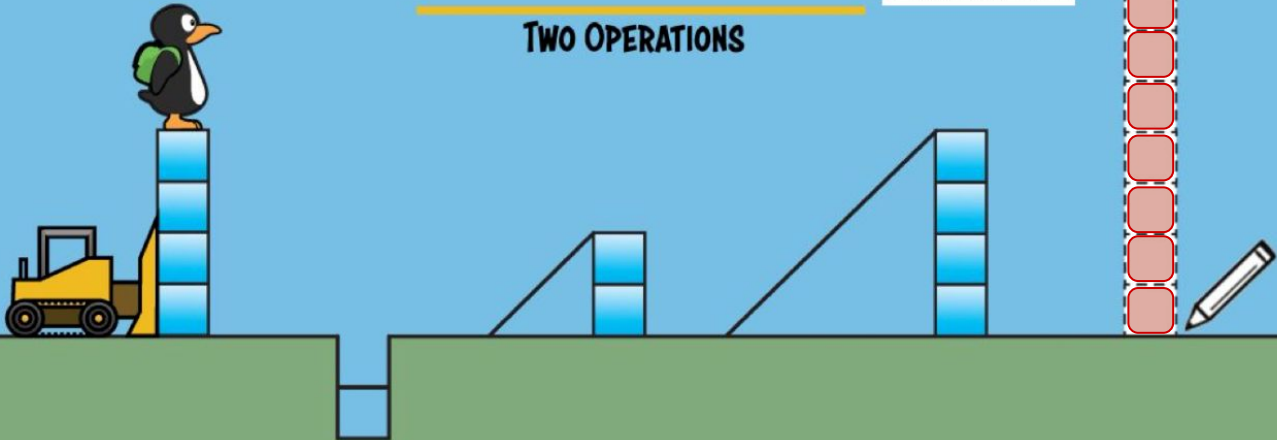
Possible answer:
 $12 + ? = 25$
13 minutes
yesterday



PUSH BOX

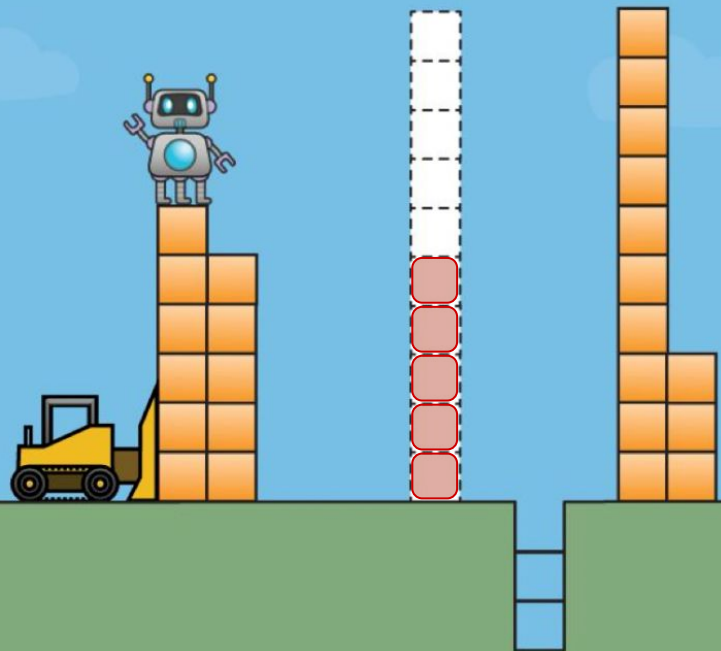


TWO OPERATIONS



Angel has 11 stickers. She got 5 more stickers from Arman and then gave 3 stickers to Mateo. How many stickers does she have now?

Possible answer:
 $11 + 5 = 16$
 $16 - 3 = 13$
Angel has 13 stickers.



Oh! The game can help me figure this out!



$$8 + 4 + 7 = 19$$

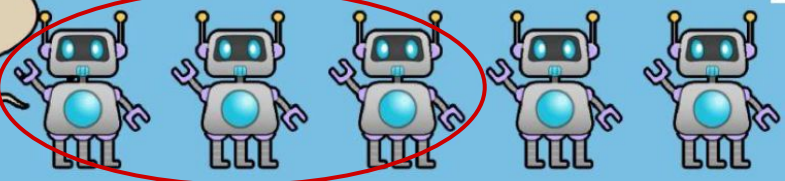
$$12 = 19 - 4 - 3$$

$$10 + 8 + 7 = 25$$

BOUNCING SHOES



Circle how many of us can wear all of these shoes.



It would take **6** ostriches to wear these shoes.



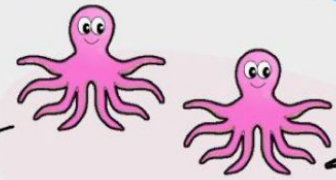
How about us?



It would take **8** dogs to wear these shoes.



It would take **2** Ants to wear these shoes.

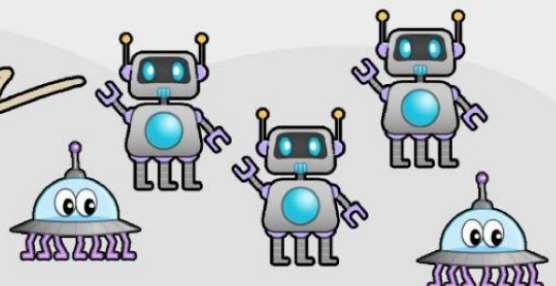


Together, we can't wear these shoes because...

Possible answer:
After one octopus wears 8 shoes, there's not another full set of 8 shoes.



How many shoes do we need?

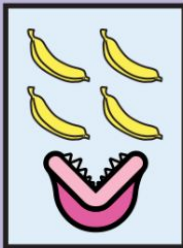
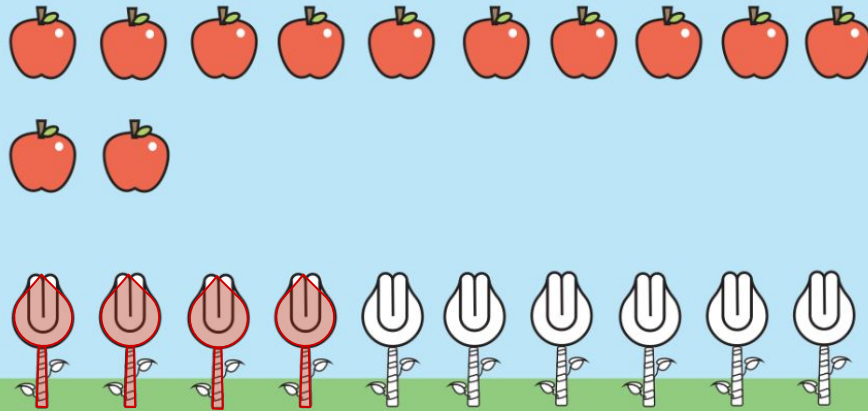
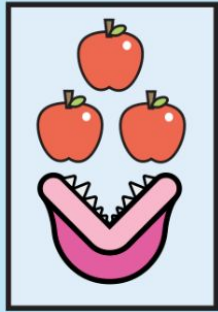
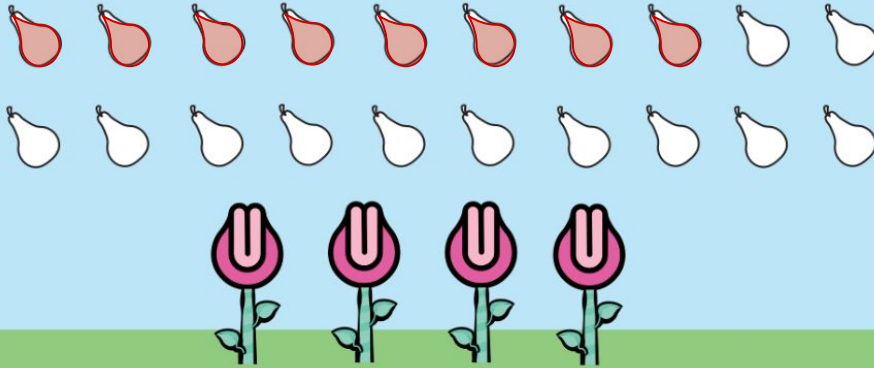
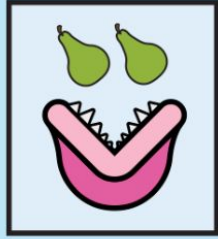


$$5 + 5 + 5 + 5 = 20$$

(shoes)

$$7 + 7 + 3 + 3 + 3 = 23$$

(shoes)



5



monsters

will eat 20



bananas

4



monsters

will eat

16



bananas

I have 16 friendship bracelets.
How many friends could I
share them with?

How many bracelets
would each of my
friends get?

*Answers may vary.
Possible answer:*

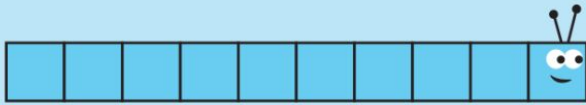
*I could share with 3 other
friends. Each of us would
get 4 bracelets.*





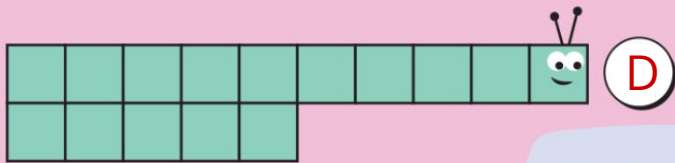
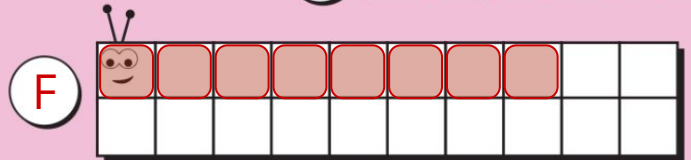
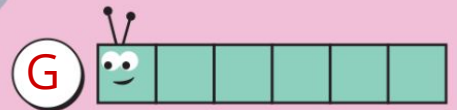
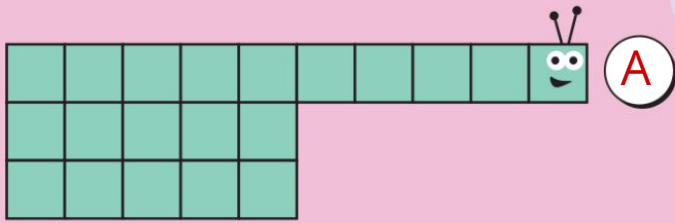
CREATE RECTANGLES

I am made of **10** squares.

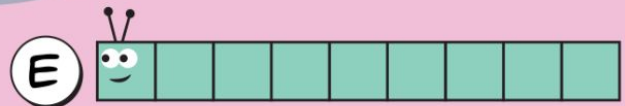
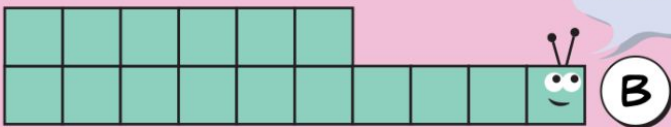


I like to rest in a nest that is a rectangle of the same size.

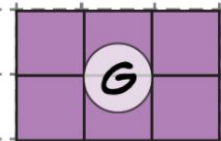
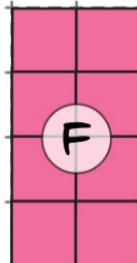
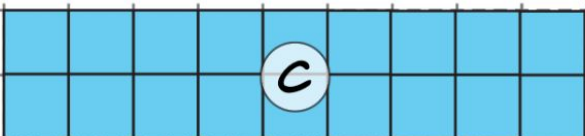
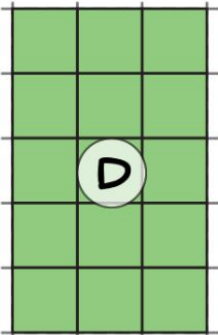
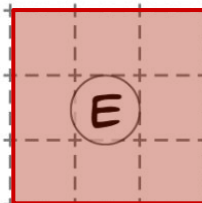
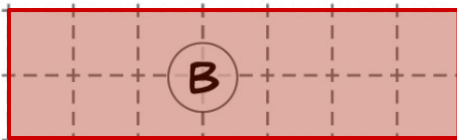
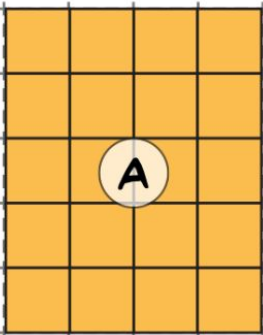
Which nest belongs to each of us?



What could my nest look like?



Answers may vary. Possible answers:



Altogether, our nests cover **92** squares.