

JIJI SUDOKU | LEVEL: MEDIUM

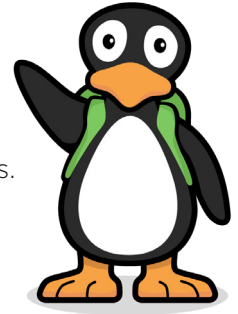
Players: 1 (or 2 working together)

Supplies: 1 sheet of JiJi Sudoku | Level: Medium and math critter game pieces cut out

Objective: To fill in one math critter in every row, column, and 3x3 grid.

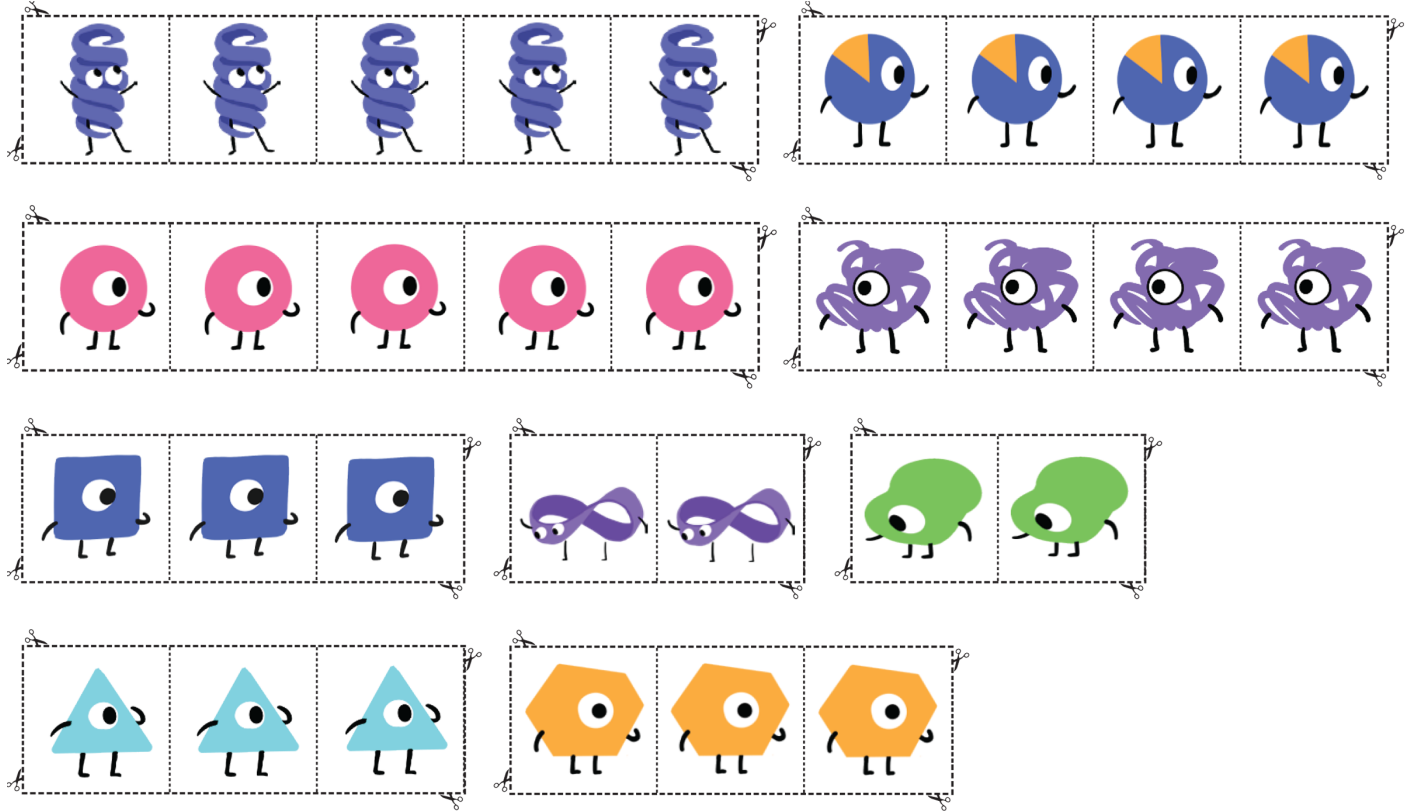
How to Play:

- There are nine unique math critters. The 9 x 9 grid is divided into smaller 3 x 3 blocks.
- Each 3 x 3 block can only contain a unique math critter.
- Each vertical column in the grid can only contain a unique math critter.
- Each horizontal row in the grid can only contain a unique critter.



| | | | | | | | | |
|--|--|--|--|--|--|--|--|--|
| | | | | | | | | |
| | | | | | | | | |
| | | | | | | | | |
| | | | | | | | | |
| | | | | | | | | |
| | | | | | | | | |
| | | | | | | | | |
| | | | | | | | | |
| | | | | | | | | |

MATH CRITTER GAME PIECES | LEVEL: MEDIUM



JIJI SUDOKU | LEVEL: CHALLENGE

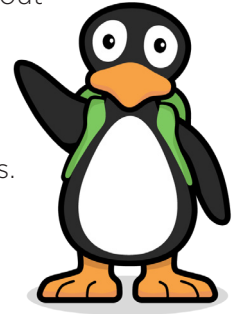
Players: 1 (or 2 working together)

Supplies: Printed 9 x 9 JiJi Sudoku | Level: Challenge and Math Critter Game Pieces cut out

Objective: To fill in one math critter in every row, column, and 3x3 grid.

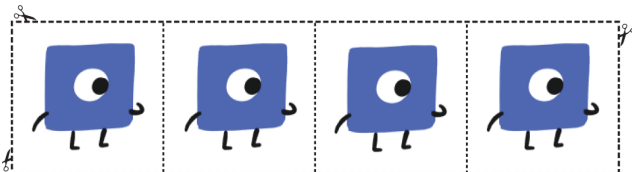
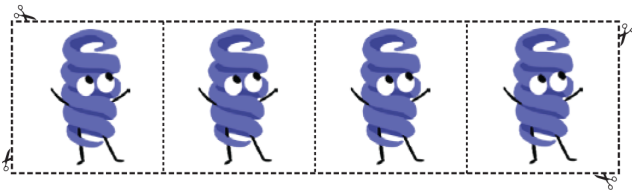
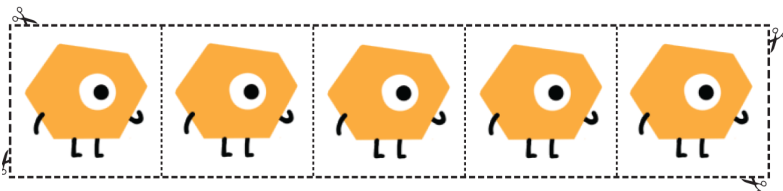
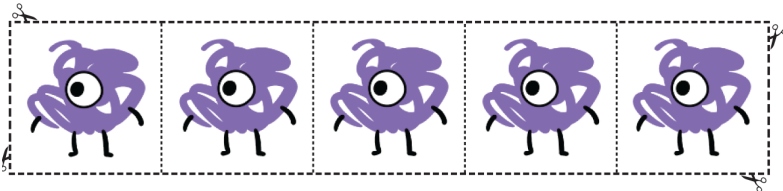
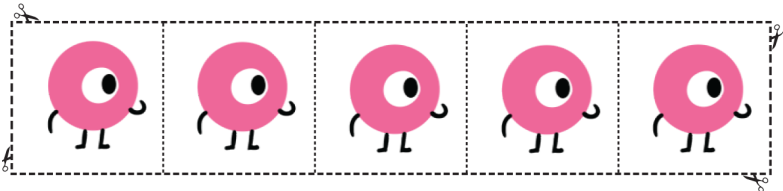
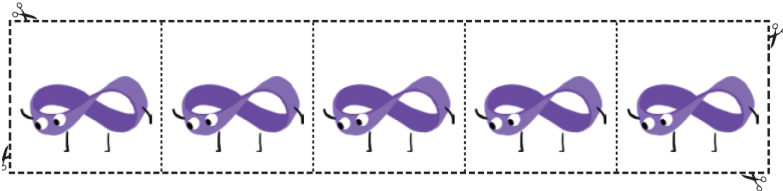
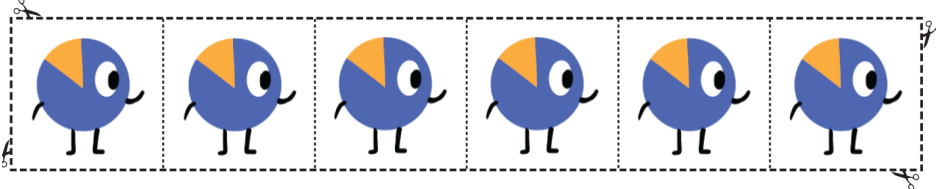
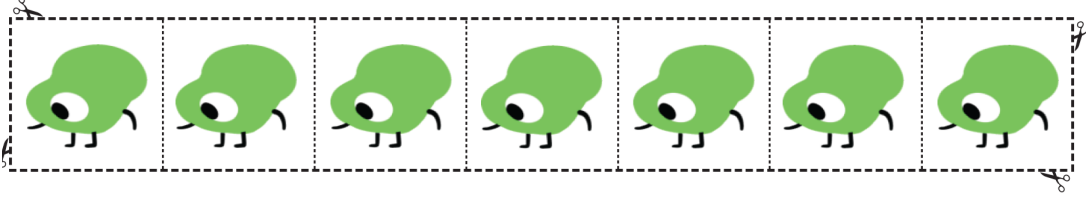
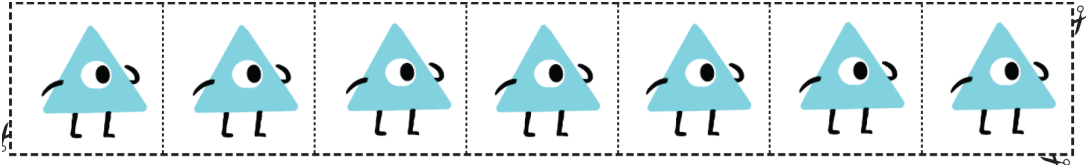
How to Play:

- There are nine unique math critters. The 9 x 9 grid is divided into smaller 3 x 3 blocks.
- Each 3 x 3 block can only contain a unique math critter.
- Each vertical column in the grid can only contain a unique math critter.
- Each horizontal row in the grid can only contain a unique math critter.



| | | | | | | | | |
|--|--|--|--|--|--|--|--|--|
| | | | | | | | | |
| | | | | | | | | |
| | | | | | | | | |
| | | | | | | | | |
| | | | | | | | | |
| | | | | | | | | |
| | | | | | | | | |
| | | | | | | | | |
| | | | | | | | | |

MATH CRITTER GAME PIECES | LEVEL: CHALLENGE



SUDOKU | LEVEL: VARIOUS

Players: 1 (or 2 working together)

Supplies: Printed Sudoku board (below)

Objective: Fill in the grid with numbers so that every row, column,

How to Play:

- The 9 x 9 grid is divided into 3 x 3 blocks.
- Complete each block with numbers 1, 2, 3, 4, 5, 6, 7, 8, 9.
- No rows or columns of the 9 x 9 grid can have the same number.

| | | | | | | | | |
|---|---|---|---|--|---|---|---|---|
| | 9 | 3 | 1 | | 5 | 6 | 4 | |
| 7 | | | | | | | | 5 |
| 5 | | 1 | 2 | | 9 | 3 | | 7 |
| 2 | | | | | | | | 3 |
| | 3 | 6 | 9 | | 7 | 5 | 2 | |
| 9 | | | | | | | | 1 |
| 3 | | 2 | 4 | | 8 | 1 | | 9 |
| 6 | | | | | | | | 4 |
| | 4 | 7 | 3 | | 2 | 8 | 5 | |

Easy

| | | | | | | | | |
|---|---|---|---|---|---|---|---|---|
| 5 | | | | | 2 | | 8 | |
| | | | | | | | | 6 |
| | | 7 | 1 | | | 5 | 3 | |
| | 3 | | 7 | | | | 5 | 9 |
| | | 2 | | 4 | | 8 | | |
| 7 | 5 | | | | 9 | | 1 | |
| | 9 | 8 | | | 4 | 3 | | |
| 1 | | | | | | | | |
| | 2 | | 8 | | | | | 5 |

Medium

| | | | | | | | | |
|---|---|---|---|---|---|---|---|---|
| 6 | 4 | | | 1 | 8 | | | 3 |
| | 2 | | | 5 | | | | |
| | | | | 7 | | 1 | | |
| | | | | | | 6 | | 7 |
| | 8 | | 2 | | 7 | | 9 | |
| 5 | | 9 | | | | | | |
| | | 7 | | 8 | | | | |
| | | | | 2 | | | 3 | |
| 2 | | | 6 | 3 | | | 7 | 4 |

Medium

| | | | | | | | | |
|---|---|---|---|---|---|---|---|---|
| 3 | | | | 8 | | | | 6 |
| | 1 | | | 6 | | 2 | | |
| | | 4 | 7 | | | 5 | | |
| | 4 | | | 1 | | 9 | | |
| 6 | | | 2 | | 4 | | | 1 |
| | | 3 | | 6 | | | 5 | |
| | | 8 | | | 3 | 6 | | |
| | 2 | | 4 | | | | 1 | |
| 5 | | | | 2 | | | | 7 |

Hard