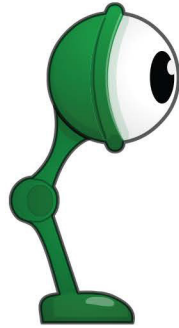


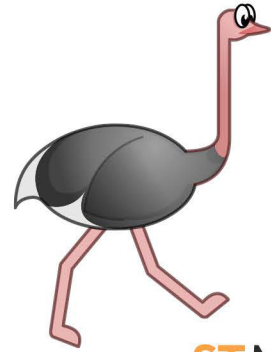
CARTAS DE ST MATH CRIATURAS



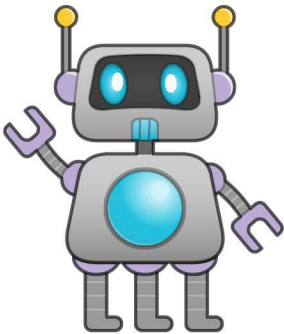
ST Math



ST Math



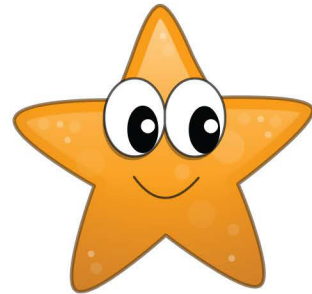
ST Math



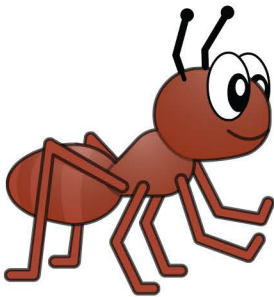
ST Math



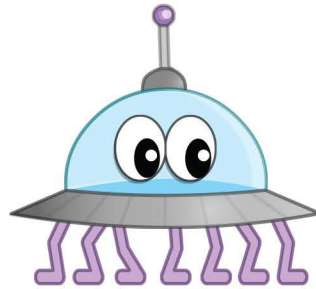
ST Math



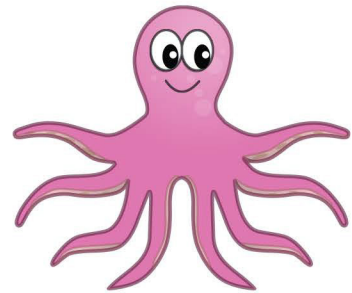
ST Math



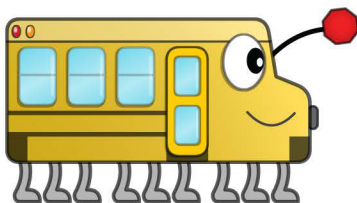
ST Math



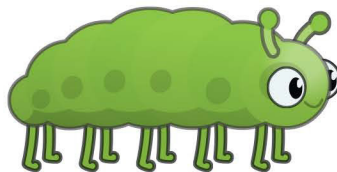
ST Math



ST Math

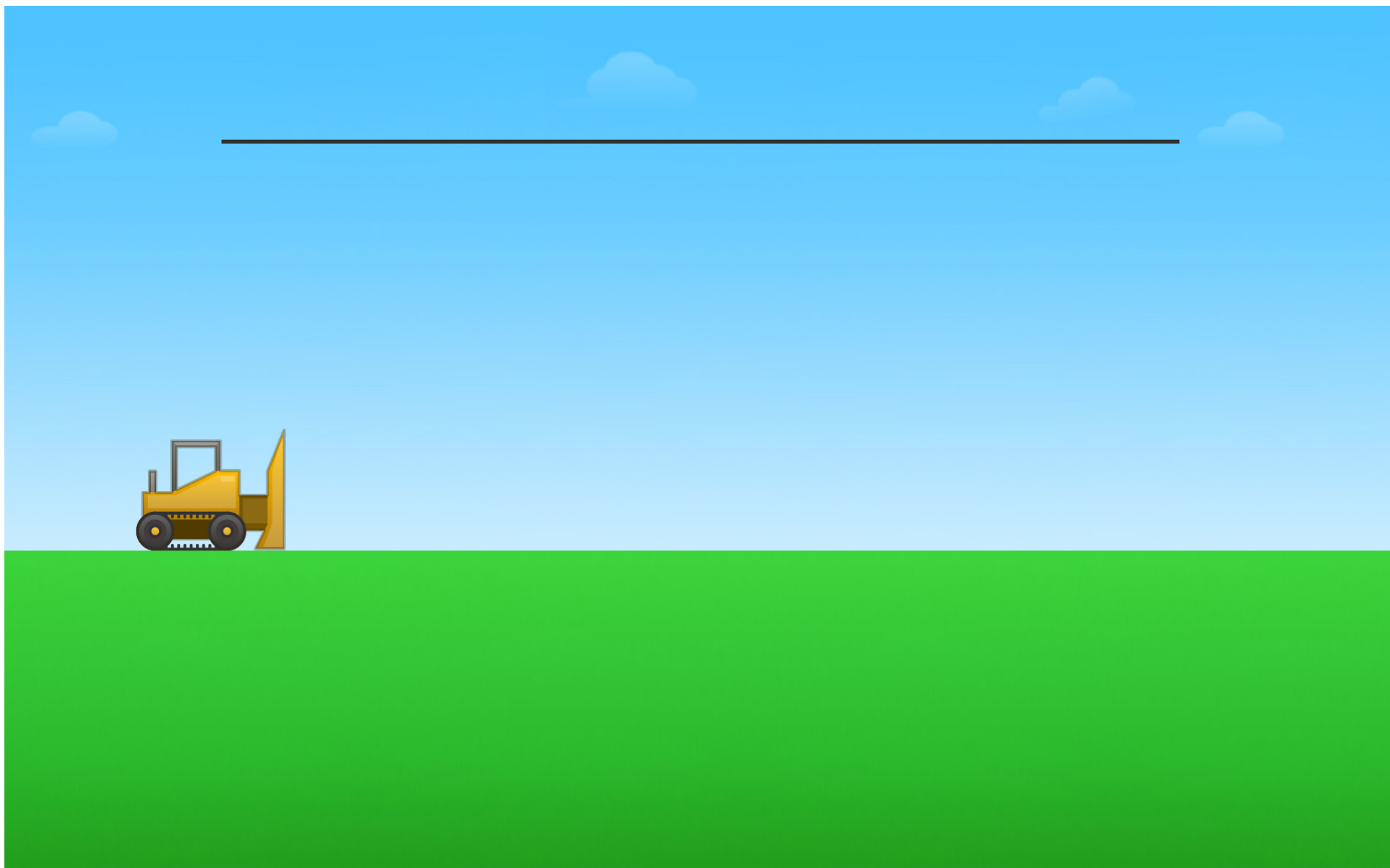


ST Math

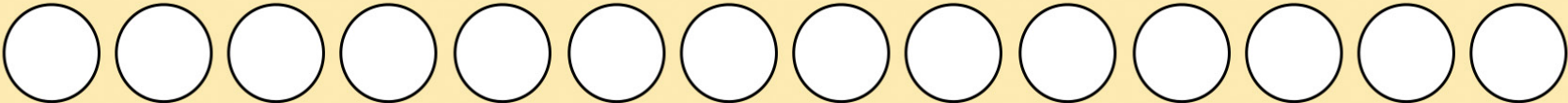
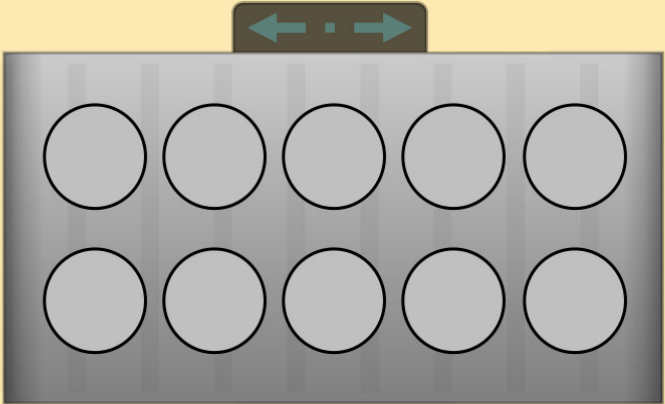
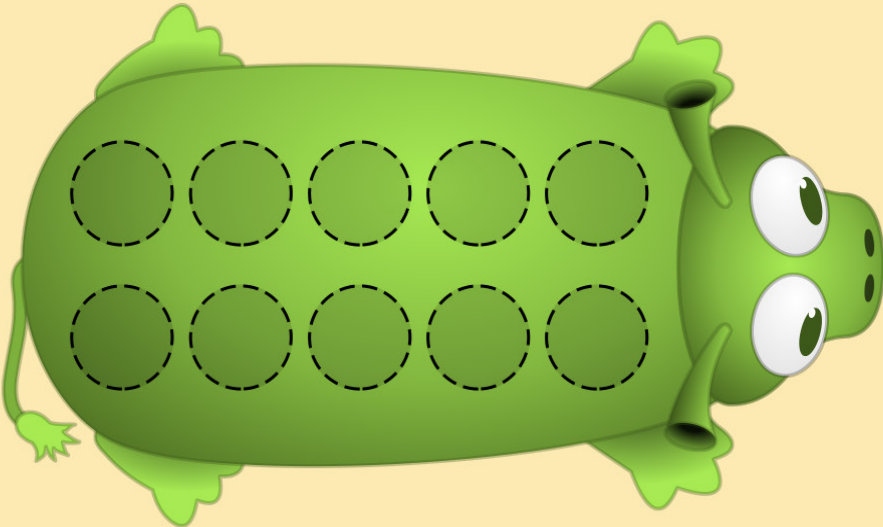


ST Math

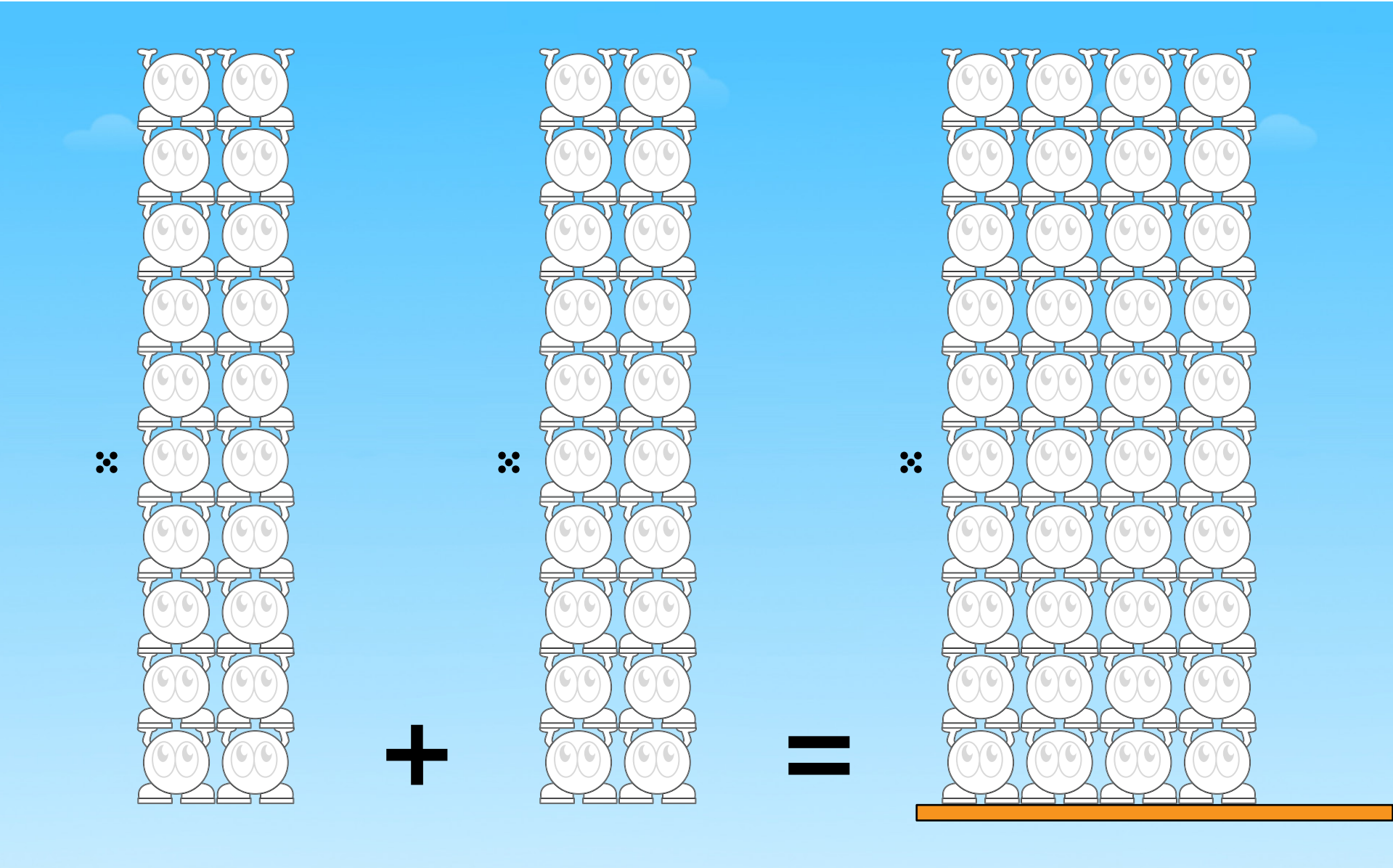
TABLERO DEL JUEGO EMPUJA CAJAS 01



TABlero DEL JUEGO MONSTRUO DE TARTA 02



TABLERO DEL JUEGO SUMA DE CRIATURAS 01



TABLERO DEL JUEGO SUMA DE CRIATURAS 02



A large blue rectangular area representing a game board. On the right side, there is a stack of 16 cartoon penguins arranged in a 4x4 grid, sitting on a brown base. On the left side, there is a mathematical equation template: a horizontal line followed by a plus sign, another horizontal line, and an equals sign.

$$\underline{\hspace{2cm}} + \underline{\hspace{2cm}} =$$